

THERMAL BRIDGE BREAK TECHNOLOGY



HATCH/HP

Smoke exhaust solutions with the highest thermal and air-tightness performance with motorised hatch



CLASSIFICATIONS AND CERTIFICATIONS

AIR TIGHT
CLASS 4 IN
ACCORDANCE
WITH EN 12207

RAINPROOF
CLASS E 1350 IN
ACCORDANCE
WITH EN 12208

FIREPROOF
CERTIFIED IN
ACCORDANCE WITH
EN 12101-3

SNOW LOAD SL1000
CERTIFIED IN
ACCORDANCE WITH
EN 12101-3

ACOUSTIC INSULATION
RW 32 (-2;-4) DB
ACCORDING TO
EN 10140-2

The entire assembly is F300 and F400 certification tested

EFFICIENT SOLUTIONS FOR SUSTAINABLE BUILDINGS

The global concern derived from the climate crisis, which continues getting worse each year, has generated a trend in sustainable construction to reduce energy consumption and consequently, CO₂ emissions.

At SODECA we meet this demand with efficient solutions for sustainable buildings, where energy savings is one of the most important factors

The installation of efficient solutions on the roofs of buildings for extracting heat and pollutants, as well as the ventilation of the building itself, are the most widely used systems for these types of applications.

Using roof-mounted motorised hatch systems with an F-400 or F-300 certificate for fire protection is one of the most efficient ways to comply with the smoke exhaust regulation in buildings as well as the energy efficiency regulations implemented by the official institutions of each country.

These HATCH/HP solutions are certified to withstand high temperatures and exhausting smoke in the event of a fire, but also to remove heat and/or pollutants and for the ventilation of the building itself. With this versatility we are able to optimise the installation as much as possible, as a single unit covers all ventilation needs.





ENERGY SAVINGS



01. AIR-TIGHTNESS

Maintains the air conditioning of the building and at the same time prevents outside air from entering inside the building.



02. INSULATION

Heat loss due to heat transfer when the extract system is not being used is practically null.



03. WATER-TIGHTNESS

Unit completely water-tight, preventing water from leaking inside the unit.



04. ACOUSTIC INSULATION

The equipment is manufactured with an enclosure featuring acoustic insulation that acts as an impenetrable barrier against both internal and external noise



ADVANTAGES OF HATCH/HP SOLUTIONS

System completely free of thermal bridges and built using cutting-edge materials.



01. SMOKE EXHAUST CERTIFICATES

Using roof-mounted motorised hatch systems with an F-400 or F-300 certificate for fire protection is one of the most efficient ways to comply with the smoke exhaust regulation as well as the energy efficiency regulations of each country.



02. VERSATILITY

Solution suitable for smoke exhaust in the event of a fire, but also to remove heat and/or pollutants and for the ventilation of the building itself. With this versatility we are able to optimise the installation as much as possible, as a single unit covers all ventilation needs.



03. THERMAL BRIDGE BREAK

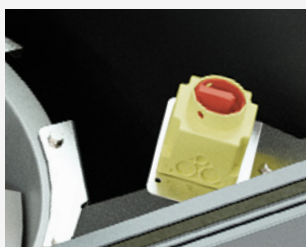
Metal components that communicate the exterior with the interior of the unit are equipped with a thermal bridge break to avoid heat loss and any possible condensation.



04. EXTREME ROBUSTNESS AND WIND RESISTANCE

The unit's housing has a high structural strength, which guarantees its stability under severe weather conditions.

CUTTING-EDGE MATERIALS



MAINTENANCE CUT-OFF INSIDE THE CASING

We recommend installing maintenance switches inside the casing to:



Ensure complete impermeability and water-tightness

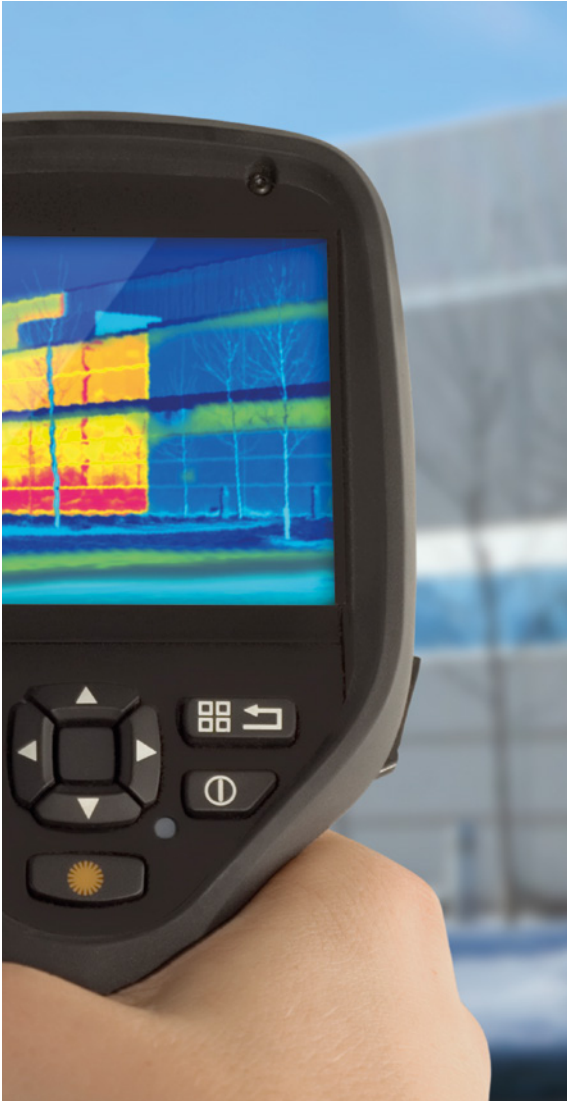


Avoid unauthorised manipulation of the switches



Increase the useful service life of the maintenance switches

* For models with F300/2h and F400/2h certifications, the fan maintenance switch is temperature resistant.



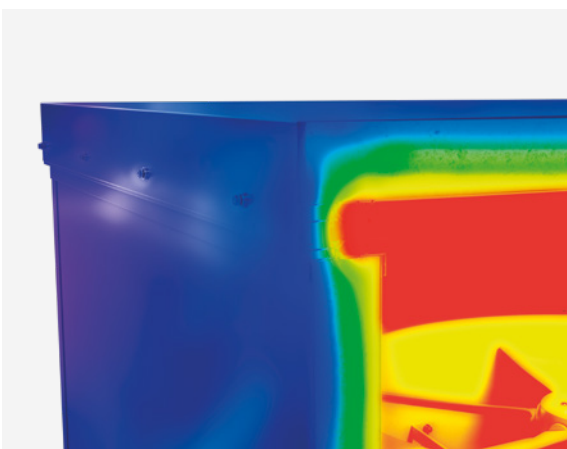
THERMAL TRANSMITTANCE

The U coefficient indicates how much thermal energy per unit of time and unit of area is transmitted through a solid object at a temperature difference of the fluids of 1 Kelvin (1 °C).

This U value is also called thermal transmittance. The greater the value of U, the more heat will flow through the casing during a specific amount of time and the lower the insulation.

The lower the value of U, the better the thermal insulation properties

The use of materials with a low thermal conductivity minimises the transfer of heat and cold through the casing, which will decrease the thermal transmittance rate (U value) and increase the energy efficiency of the building.



The new **HATCH/HP** has an extraordinarily low thermal transmittance coefficient:

$$U = 0.39 \text{ W/m}^2\cdot\text{K}$$

To calculate the value of U, a heat transfer has been considered by induction as well as convection and of the different areas: profiles, panels and cover.

THERMAL BRIDGE BREAK TECHNOLOGY

Thermal bridge break technology is essential for units that are built using metal elements that communicate the outside with the inside of a building.

This technology consists of cutting the thermal conductivity of these metal components with a material with less conductivity.

- 1 Sandwich panel made of pre-finished steel with a 60-mm-thick polyurethane core.
- 2 Air-tightness seals.
- 3 Thermal bridge break.
- 4 Pyramid cover.
- 5 Aluminium profile.

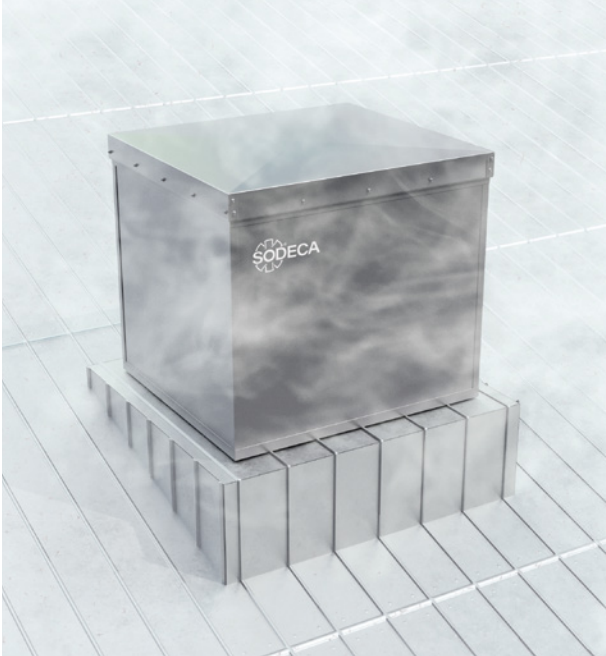


THERMAL BREAK BRIDGE

To provide excellent thermal performance and prevent possible condensation from forming inside, all metal components that communicate the exterior with the interior of the unit are equipped with a thermal bridge break.



CLASSIFICATIONS AND CERTIFICATIONS



AIR TIGHT

CLASS 4 IN ACCORDANCE WITH EN 12207

Air tightness is a fundamental property for reducing the air conditioning losses of a building. Air conditioning loss is the leaking of air towards the inside or outside through unintended gaps or holes on the casing.

The outer casing of the HATCH/HP is completely sealed to prevent the entry or exit of air while the hatch is closed. Also, the hatch is equipped with two air-tight seals; one vertical and one horizontal, that guarantees an excellent seal between the hatch and the casing.



RAINPROOF

CLASS E 1350 IN ACCORDANCE WITH EN 12208

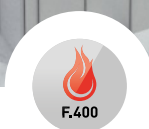
The outside of the unit is completely impermeable to prevent outside water from entering. There are no orifices that communicate the outside with the inside and all joints are sealed. Unit completely impermeable, preventing water from leaking inside the unit.

ACOUSTICALLY INSULATED

RW 32 (-2;-4) DB ACCORDING TO EN 10140-2

The product's enclosure ensures high noise reduction thanks to its combination of insulated panels and airtight seals. This equipment has been laboratory tested in accordance with standard EN 10140-2 to determine the overall airborne sound reduction index.





RESISTANCE TO FIRE

CERTIFIED IN ACCORDANCE WITH 12101-3

The main purpose of this solution is the extract smoke in the event of a fire. For this reason, all HATCH/HP models are subjected to different robustness tests under extreme snow load and wind conditions, as well as fire resistance certification tests in accordance with standard EN-12101-3.



SNOW LOAD SL1000

CERTIFIED IN ACCORDANCE WITH 12101-3

Thanks to a powerful actuator and a completely rigid structure, a snow load resistance of 1000 Pa is achieved in all sizes.

This unit has been tested and this snow load performance has been certified in accordance with EN 12101-3 by an accredited laboratory.

Certifications in accordance with EN-12101-3	Classification	Open time	Wind load (WL)	Snow load (SL)
HATCH/HP	F400/2h — F300/2h	<30 sec	200 Pa + 3 cycles	SL-1000

SOLUTIONS WITH MATCHING MOTORISED FACADE HATCHES

An efficient solution:

For day-to-day ventilation



To minimise building heat loss



For smoke extract in the event of a fire
(in accordance with current legislation)



To enhance buildings appearance
by customising the hatch



*System tested and certified
by accredited bodies*



DESIGNED FOR THE FUTURE



WALL SYSTEM



EUROPE

FINLAND

Sodeca Finland, Oy
HUITTINEN
 Sales and Warehouse
 Mr. Kai Yli-Sipilä
 Metsälännankatu 26
 FI-32700 Huitinen
 Tel. + 358 400 320 125
 orders.finland@sodeca.com

FINLAND

Sodeca Finland, Oy
VANTAA
 Sales and Warehouse
 Ainontie 12
 FI-01630 Vantaa

Smoke Extraction

Mr. Antti Kontkanen
 Tel. +358 400 237 434
 akontkanen@sodeca.com
 Mrs. Kaisa Partanen
 Tel. +358 451 308 038
 kpartanen@sodeca.com

Industrial Applications

Mr. Jarno Pikkumäki
 Tel. +358 407 723 472
 jpikkumaki@sodeca.com

ITALIA

Sodeca Italia
 Viale del Lavoro, 28
 37036 San Martino B.A.
 (VR), ITALY
 Tel. +39 045 87 80 140
 vendite@sodeca.com

NORWAY

Sodeca Norge AS
 Per Krohgs vei 4C
 1065 Oslo
 NORWAY
 Tel. +47 23 28 80 90
 post@sodeca.no

PORTUGAL

Sodeca Portugal, Unip. Lda.
PORTO
 Rua Veloso Salgado
 1120/1138
 4450-801 Leça de Palmeira
 Tel. +351 229 991 100
 geral@sodeca.pt

LISBOA

Pq. Emp. da Granja Pav. 29
 2625-607 Vialonga
 Tel. +351 219 748 491
 geral@sodeca.pt

ALGARVE

Rua da Alegria, 33
 8200-569 Ferreiras
 Tel. +351 289 092 586
 geral@sodeca.pt

UNITED KINGDOM

Sodeca Fans UK, Ltd.
 Mr. Mark Newcombe
 Tamworth Enterprise Centre
 Philip Dix House, Corporation
 Street, Tamworth, B79 7DN
 UNITED KINGDOM
 Tel. +44 (0) 1827 216 109
 sales@sodeca.co.uk

AMERICA

CHILE

Sodeca Ventiladores, SpA.
 Sra. Sofía Ormazábal
 Santa Bernardita 12.005
 (Esquina con Puerta Sur)
 Bodegas b24 a b26,
 San Bernardo, Santiago, CHILE
 Tel. +56 22 840 5582
 ventas.chile@sodeca.com

COLOMBIA

Sodeca Latam, S.A.S.
 Sra. Luisa Stella Prieto
 Calle7 No. 13 A-44
 Manzana 4 Lote1, Montana
 Mosquera, Cundinamarca
 Bogotá, COLOMBIA
 Tel. +57 1 756 4213
 ventascolumbia@sodeca.co

PERU

Sodeca Perú, S.A.C.
 Sr. Jose Luis Jiménez
 C/ Mariscal Jose Luis de
 Orbegoso 331. Urb. El pino.
 15022, San Luis. Lima, PERÚ
 Tel. +51 1 326 24 24
 Cel. +51 994671594
 comercial@sodeca.pe



HEADQUARTER

Sodeca, S.L.U.
 Pol. Ind. La Barricona
 Carrer del Metall, 2
 E-17500 Ripoll
 Girona, SPAIN
 Tel. +34 93 852 91 11
 General sales: comercial@sodeca.com
 Export sales: ventilation@sodeca.com

PRODUCTION PLANT

Sodeca, S.L.U.
 Ctra. de Berga, km 0,7
 E-08580 Sant Quirze de Besora
 Barcelona, SPAIN
 Tel. +34 93 852 91 11
 General sales: comercial@sodeca.com
 Export sales: ventilation@sodeca.com



www.sodeca.com